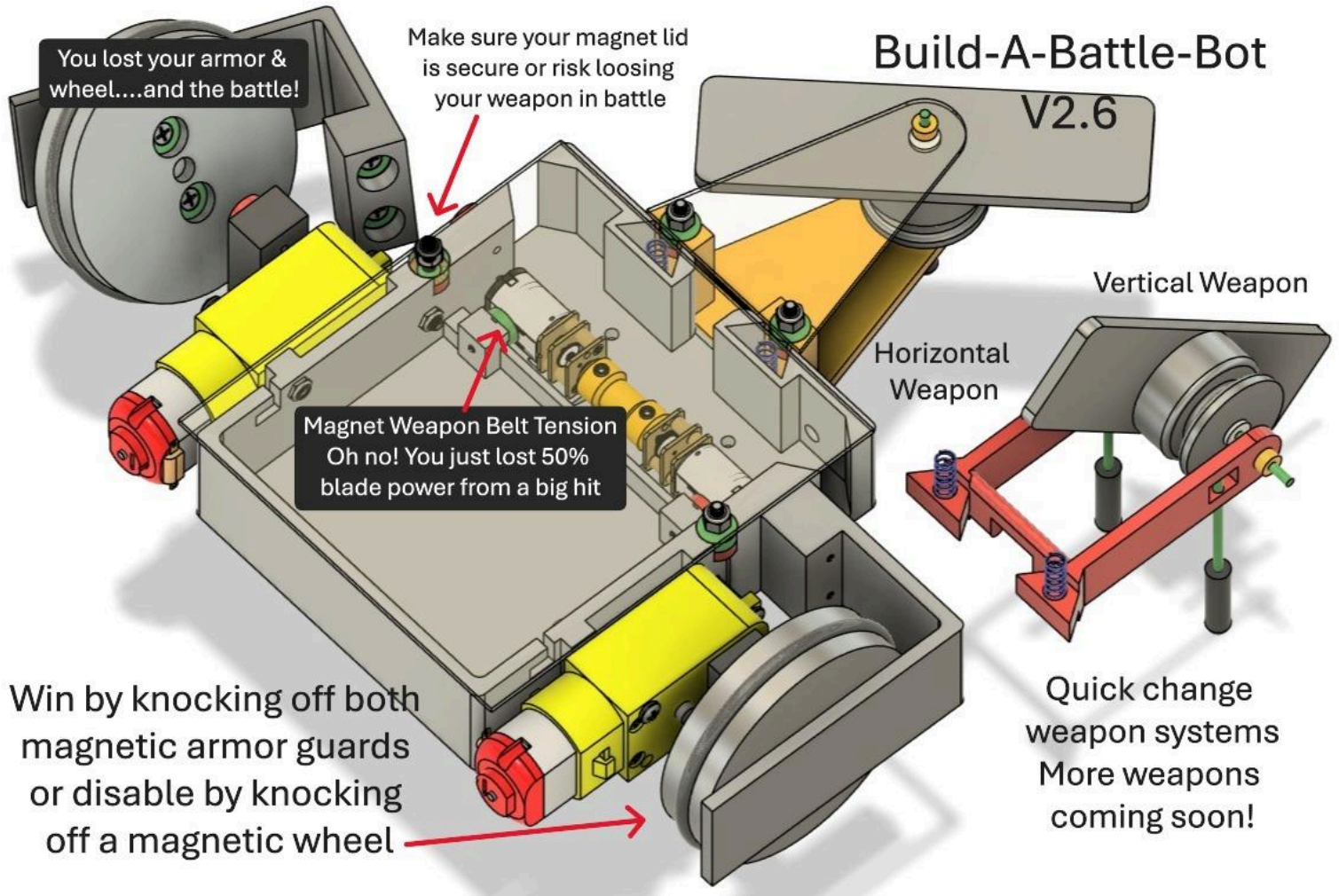


Battle Robot Kit

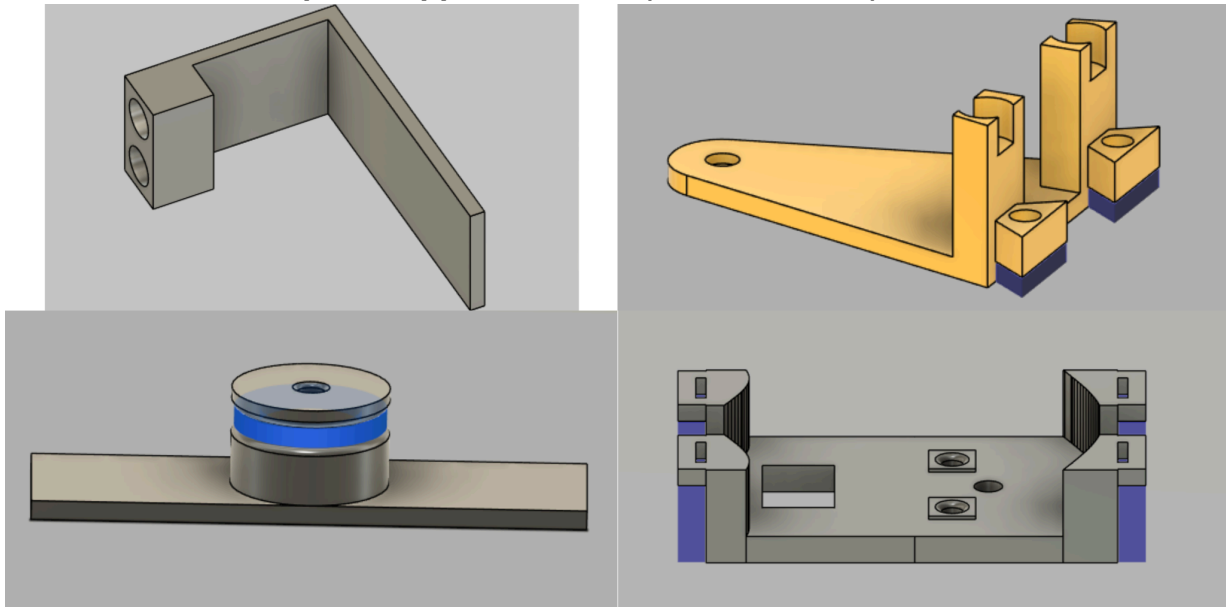
Build-A-Battle-Bot V2.6.4

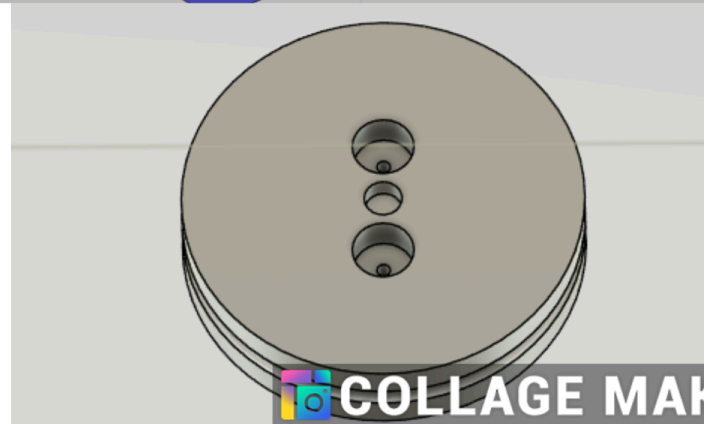
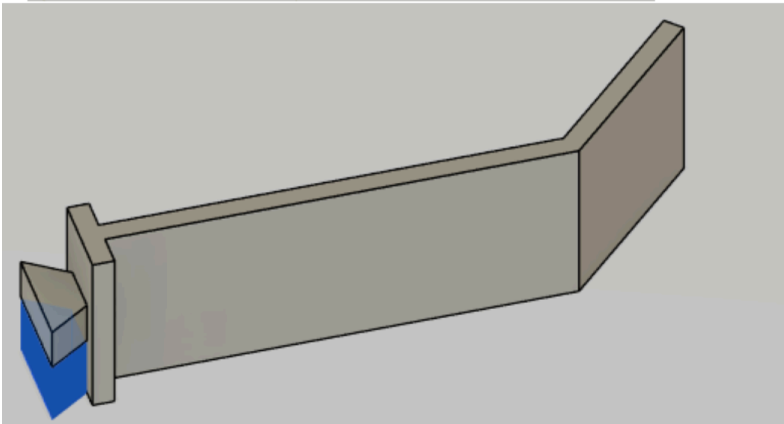
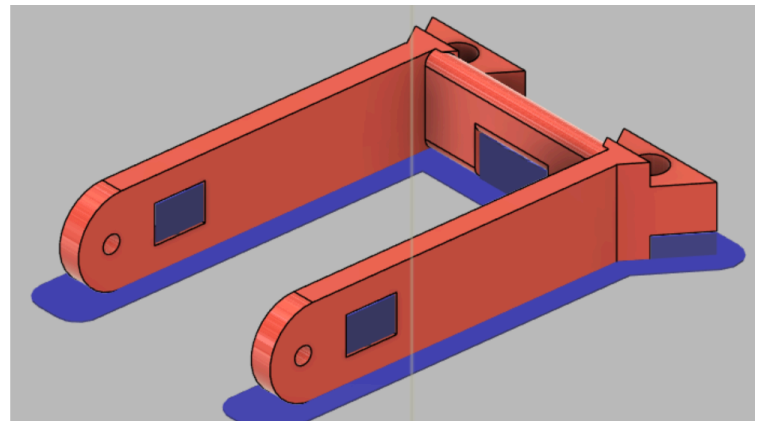
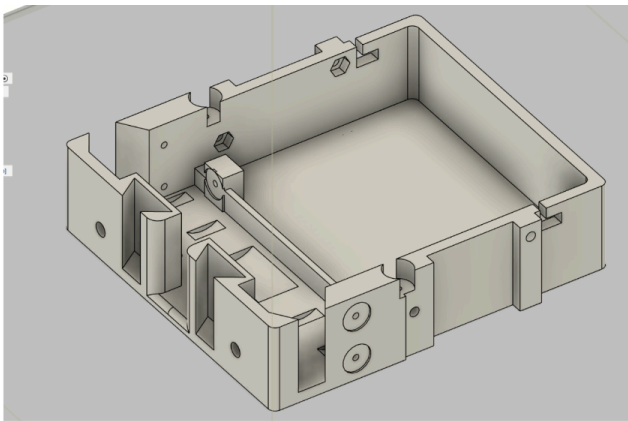


Charge your batteries now so they are ready by the end of the build!!!!

Step 1: See pictures below. Prep 3D Printed Parts

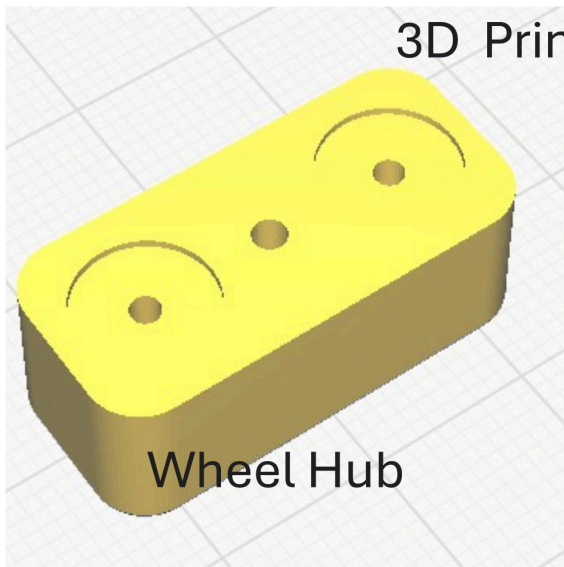
Needed: Tool to remove 3D print support material (Shown in blue). Screwdriver included works also



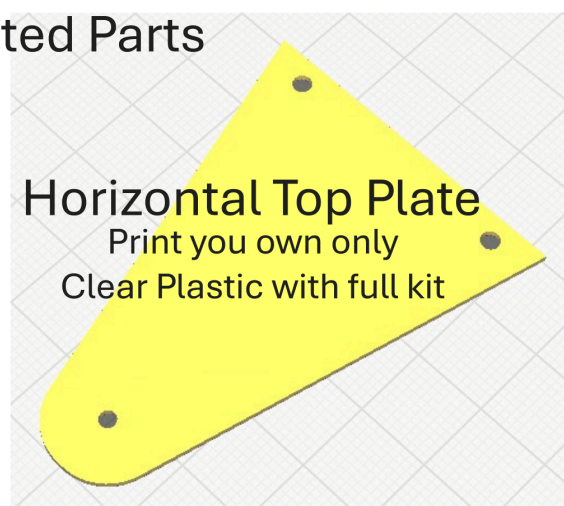


 COLLAGE MAKER

3D Printed Parts



Wheel Hub



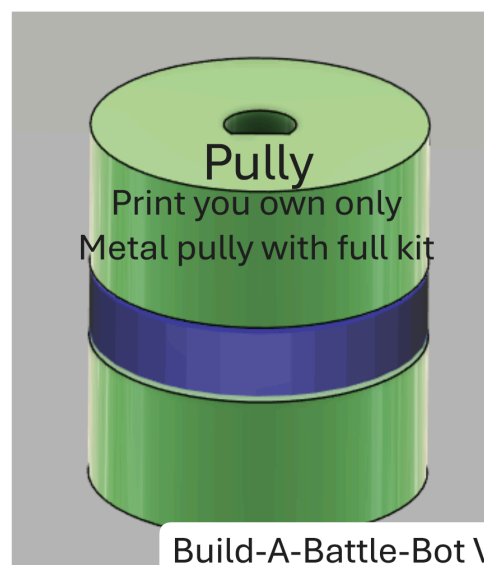
Horizontal Top Plate

Print you own only
Clear Plastic with full kit



Lid

Print you own only
Clear Plastic with full kit



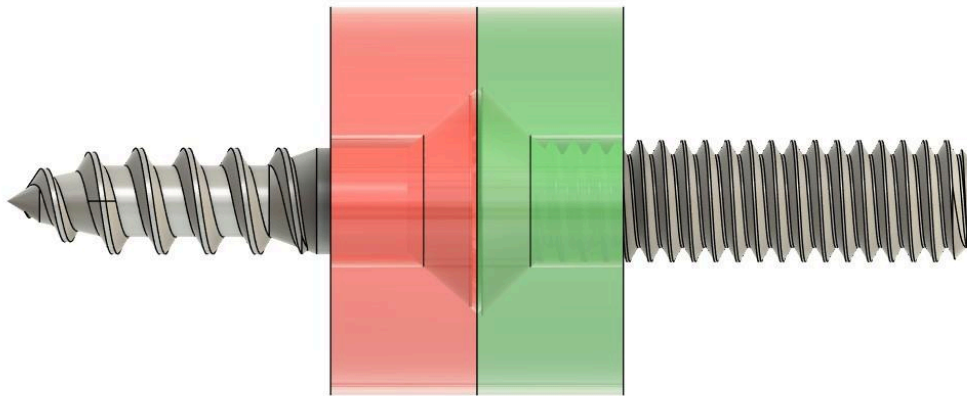
Pully

Print you own only
Metal pully with full kit

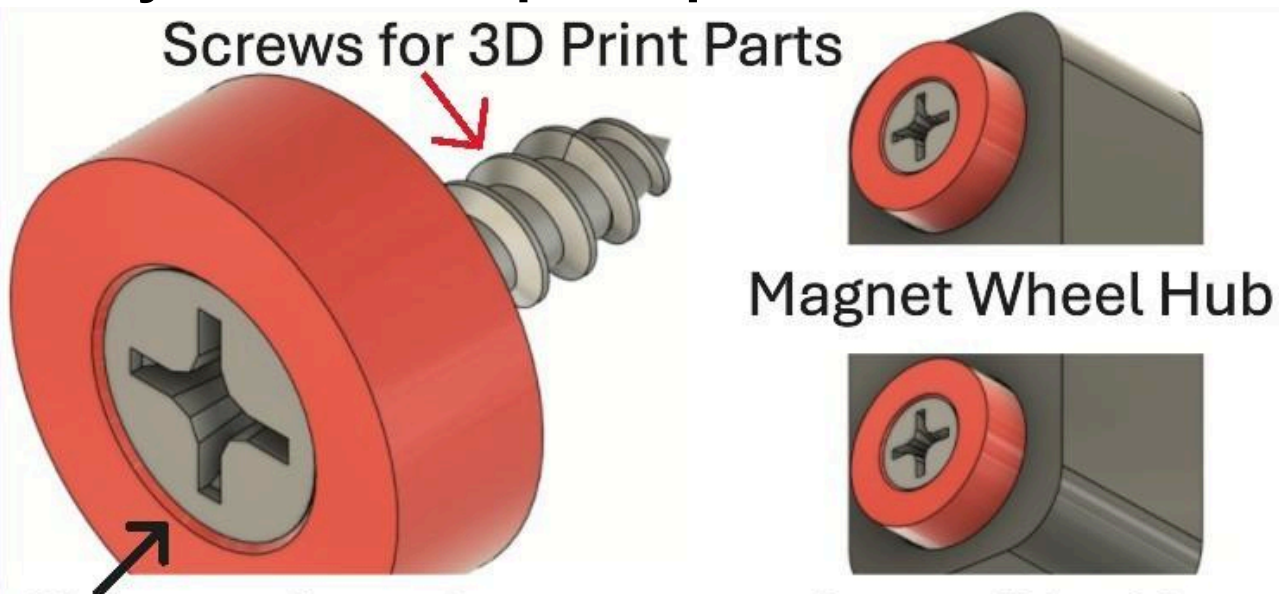
Step 2: Separate all magnets from all the bags into N & S.
Pick N or S and attach magnets to chassis, horizontal
weapon & wheel hubs. See Pictures below.

Be careful with the magnets as if you let them snap
together, they will crack!!!

(2 extra magnets included with weapon system)



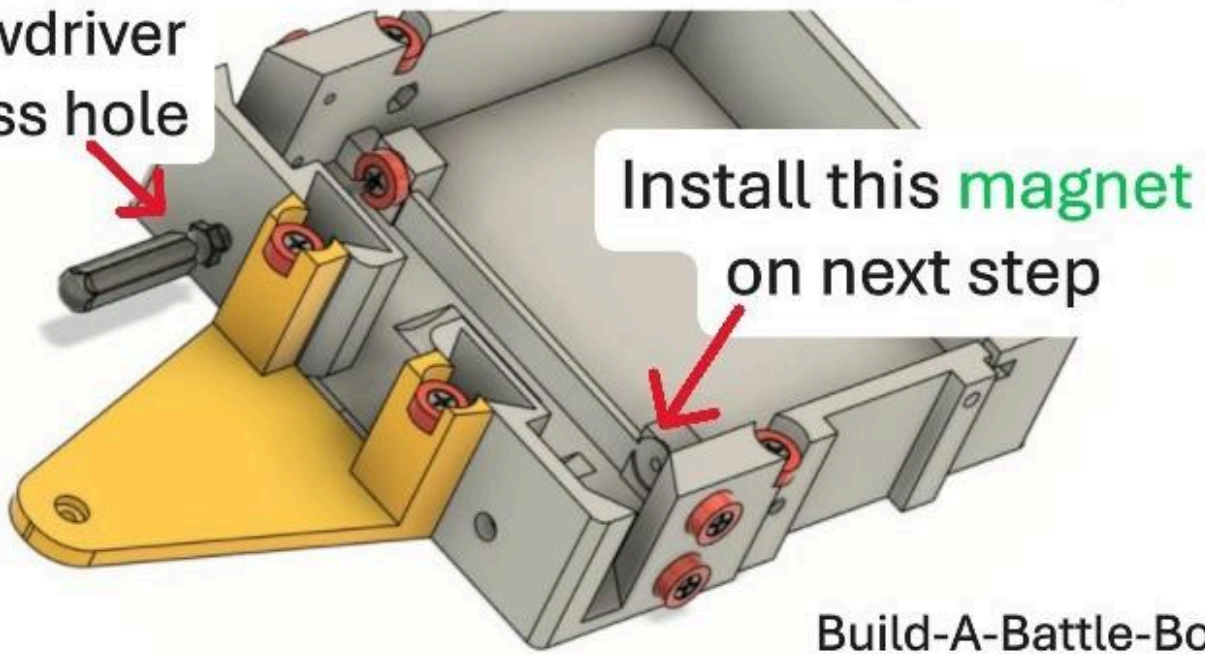
North & South magnets. Magnets polarity you choose
for step 2 & 3 not important but they must be opposite
polarity for each steps so parts attach to each other



Choose a bag of magnets and use all in this step

File tip of screwdriver for better torque. Dont over tighten. Snug fit desired

Screwdriver
access hole

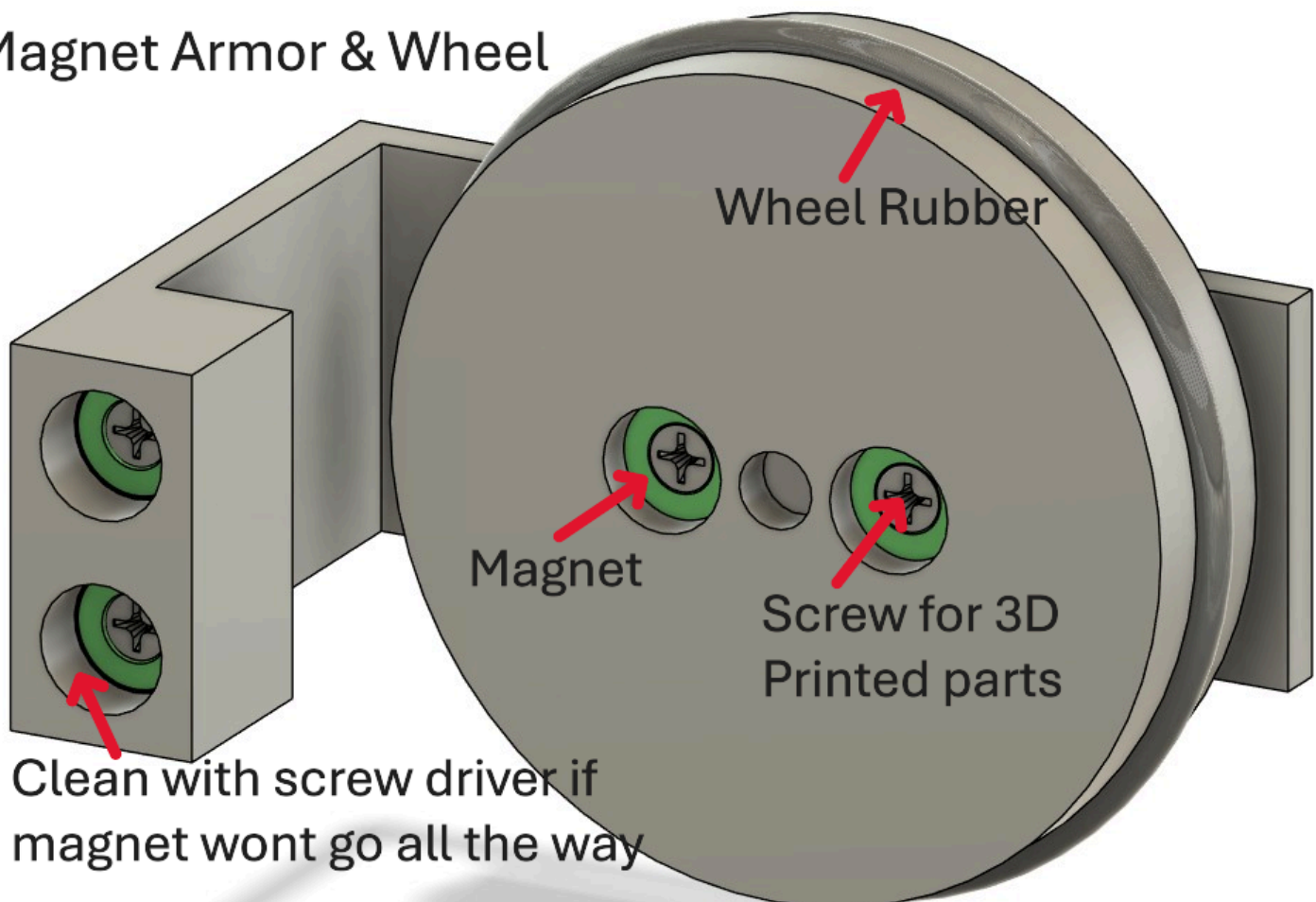


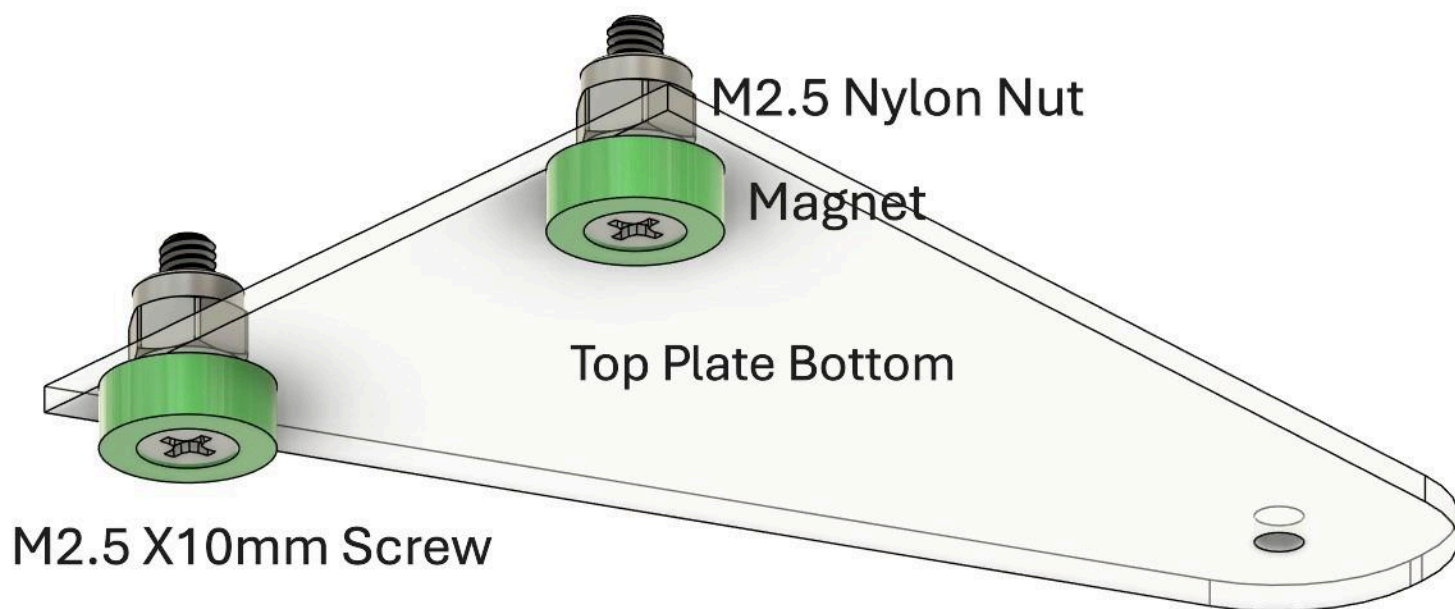
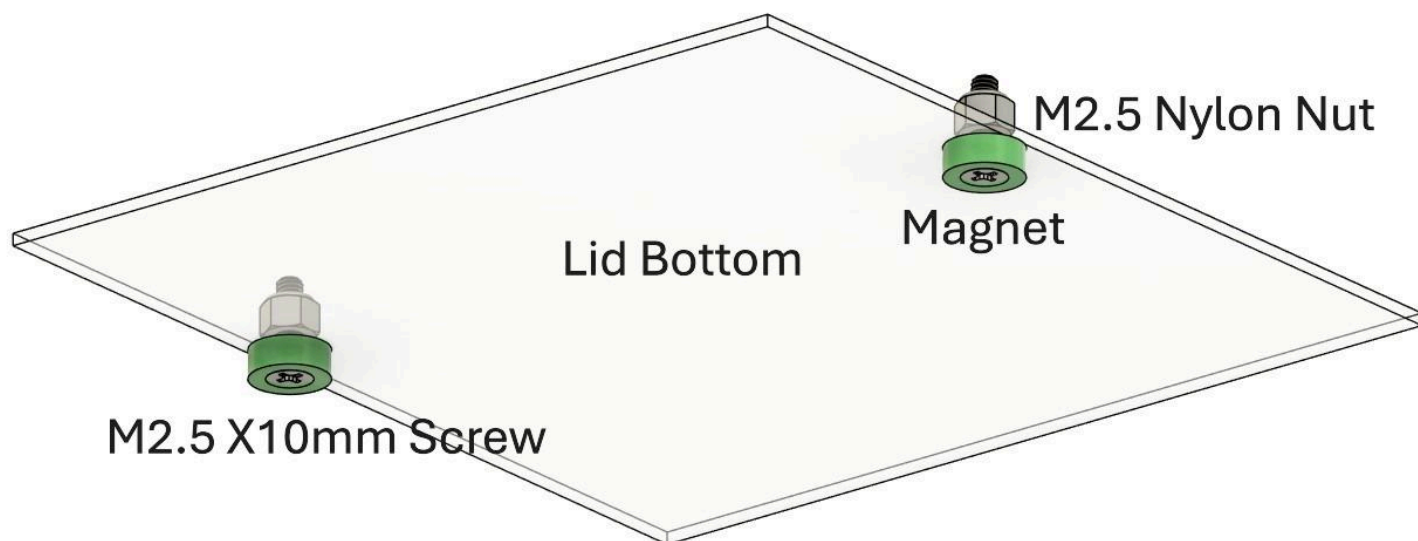
Build-A-Battle-Bot V2.6

Step 3: Attach opposite polarity **magnets to lid, top plate, wheels, armor & 1 to chassis. See pictures below**

Tools needed: Pliers, wrench or socket to hold 2.5mm nylon hex nut to install magnet to lid & top plate.

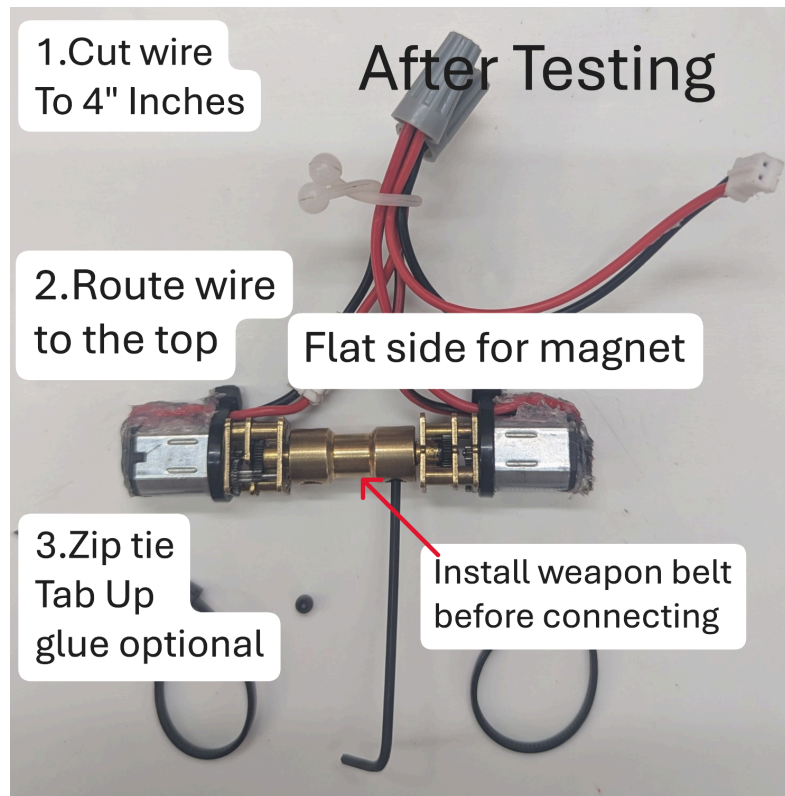
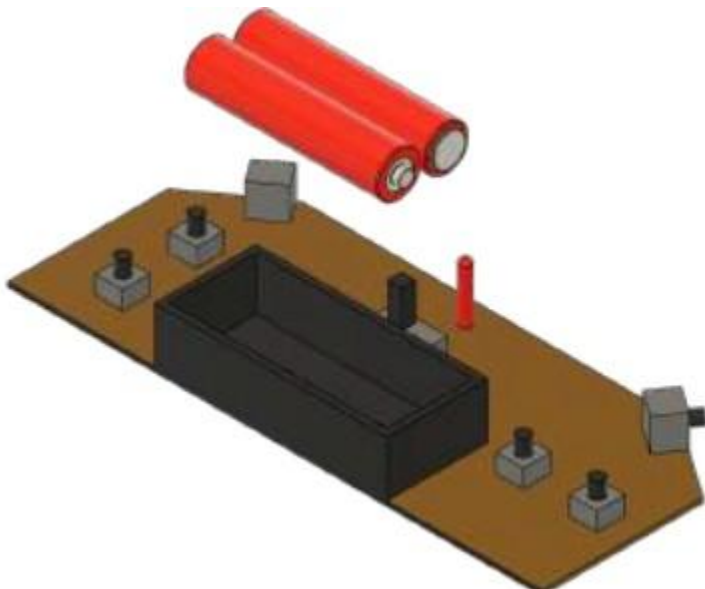
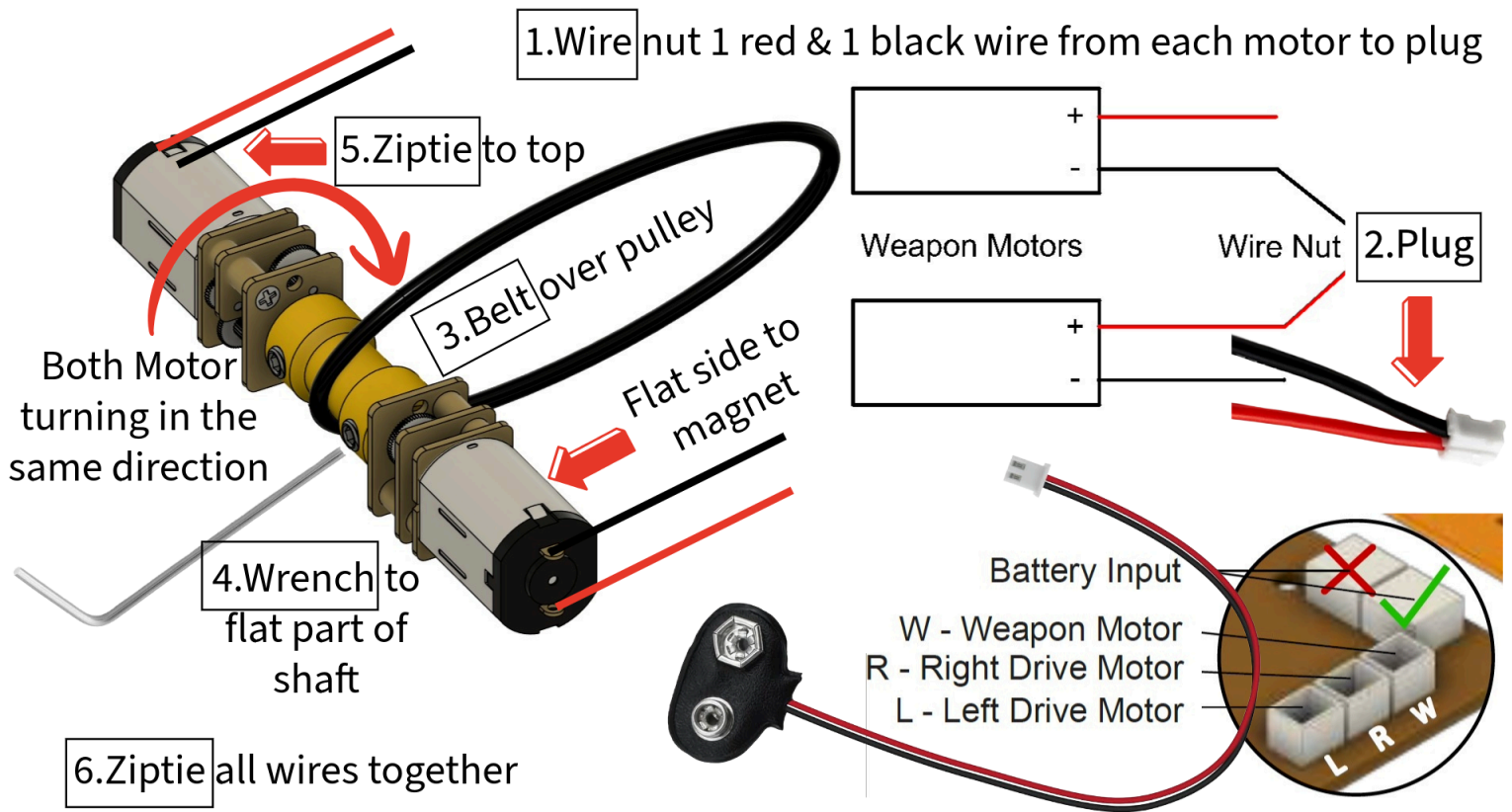
Magnet Armor & Wheel





Step 4: Weapon System

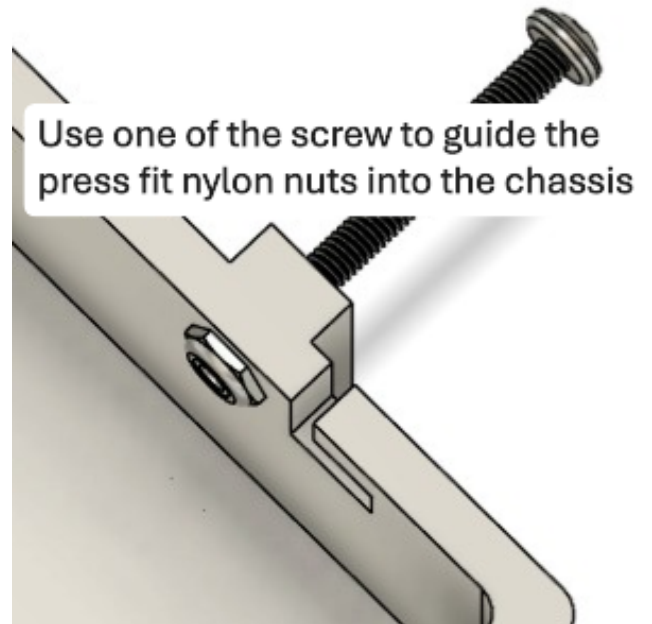
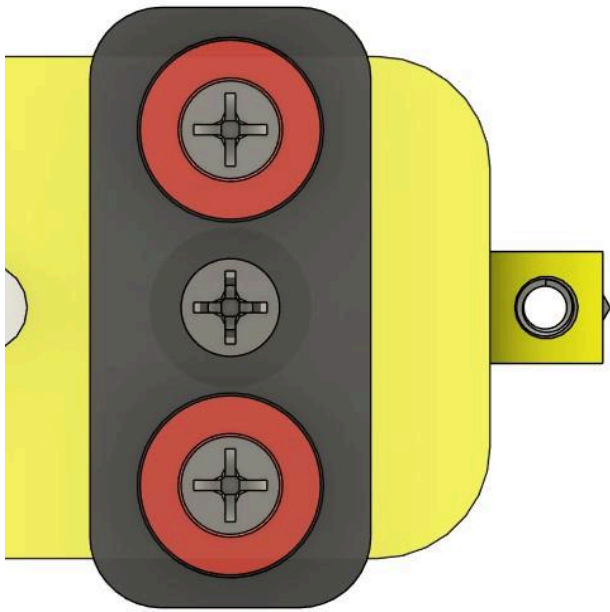
Not Provided: Something to strip the wire and cut zip ties. Scissors will work



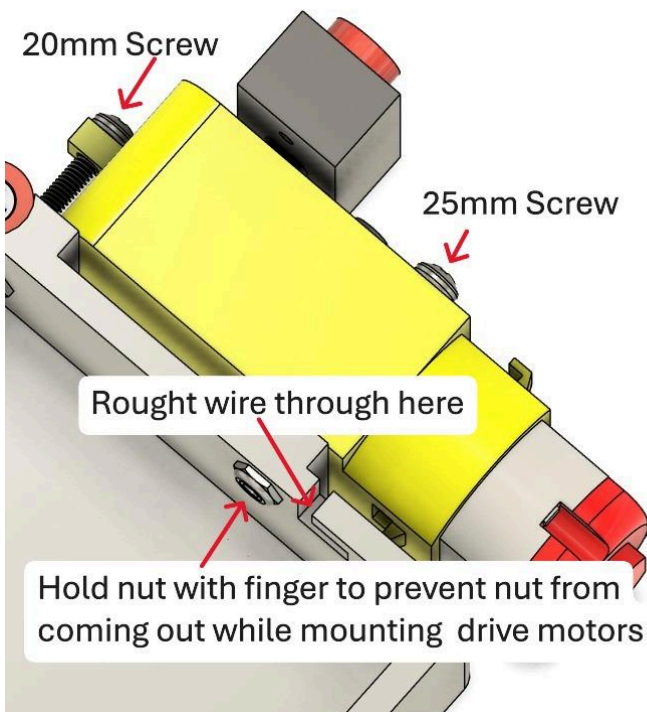
Step 5: Mount Drive Motors & Test

Provided: Chassis, drive motors, screw driver and drive motor mounting screws.

1. Press the wheel hub onto the drive motors. Placing the hub on a hard surface and pressing the motor shaft into the hub works best. Clean hub with screwdriver if it won't press on with a little force. Then use one of the plastic screws to secure the hub to the motor



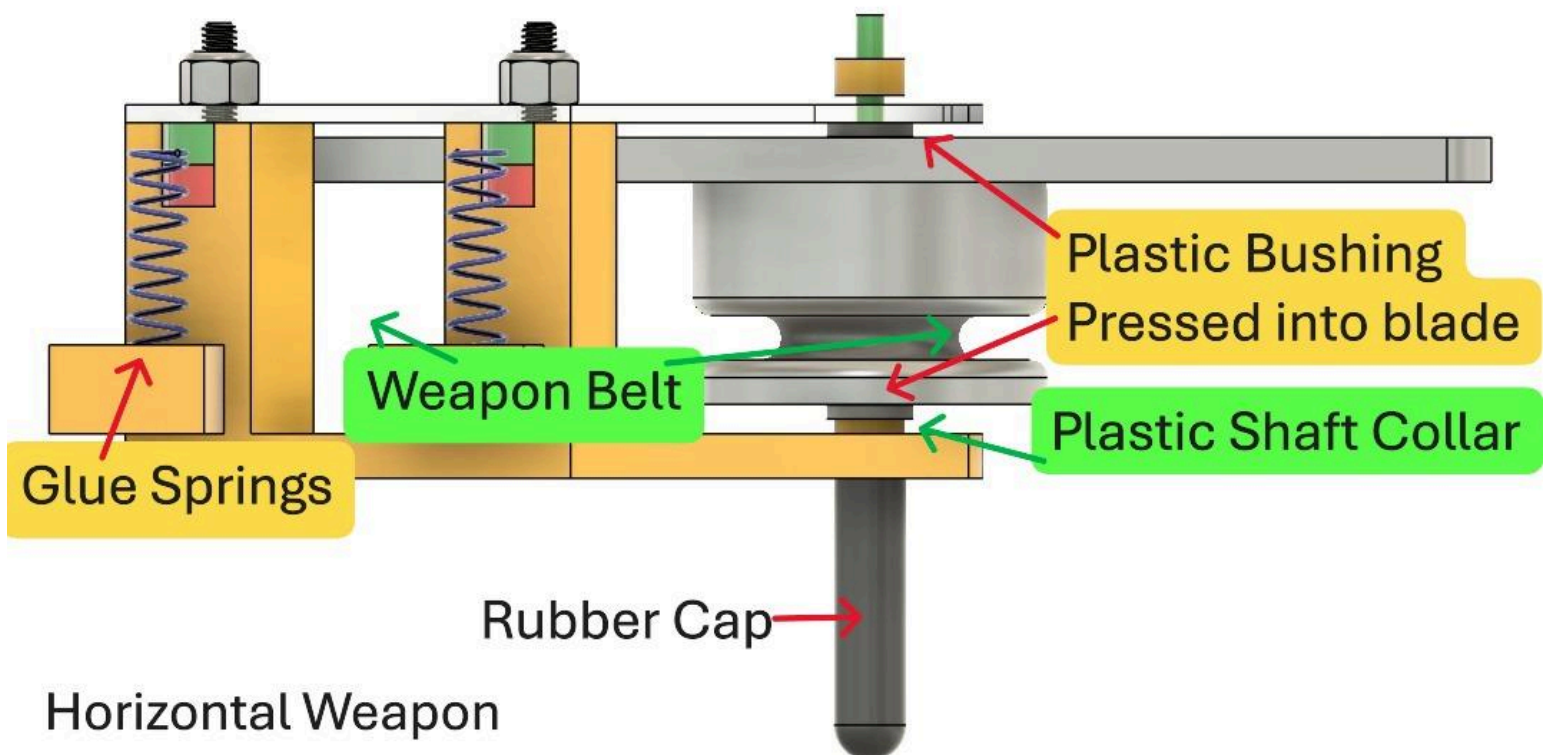
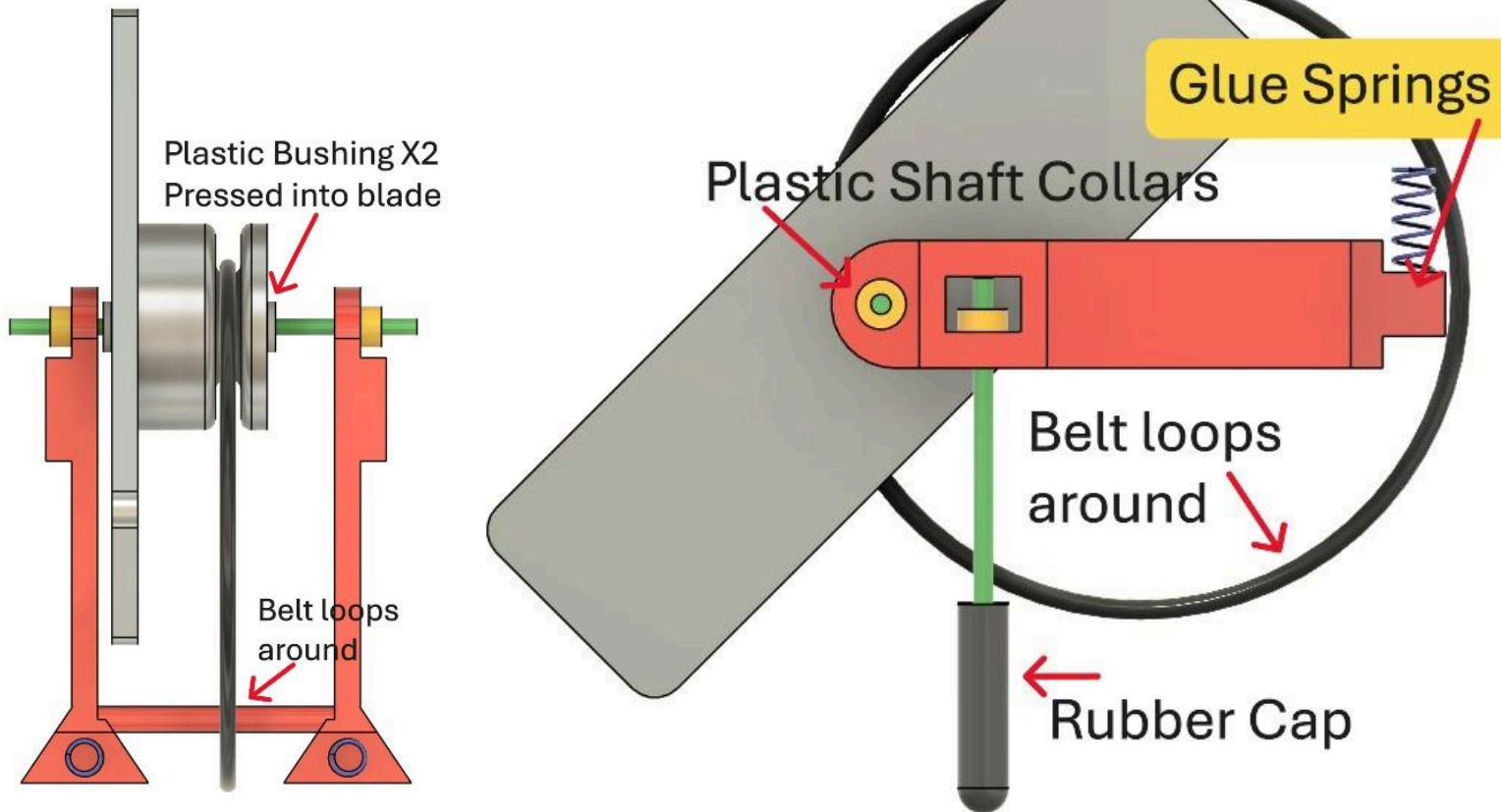
Press the nuts x 4 into the chassis. Use one of the screws to guide the nuts into the chassis. See picture above



Step 6: Mount weapon blade

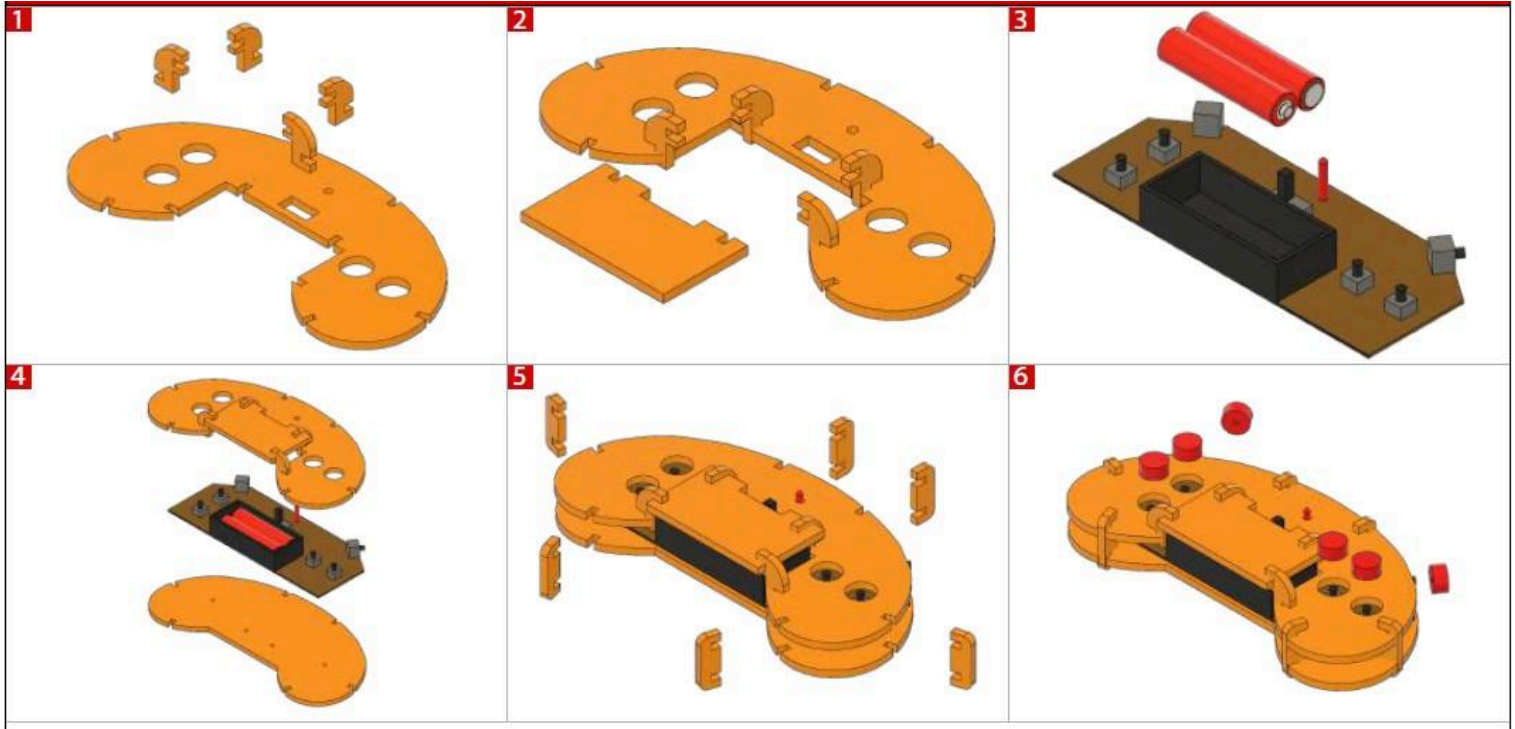
Provided: Weapon blade, weapon attachment, belt, springs, crazy glue, shafts, bushings, screw driver, shaft collars & rubber caps.

Vertical Weapon



Step 8: Remote

Not Provided: AA Batteries X2 for remote



4. Use the screwdriver and screws provided to mount the remote board to the back plate

